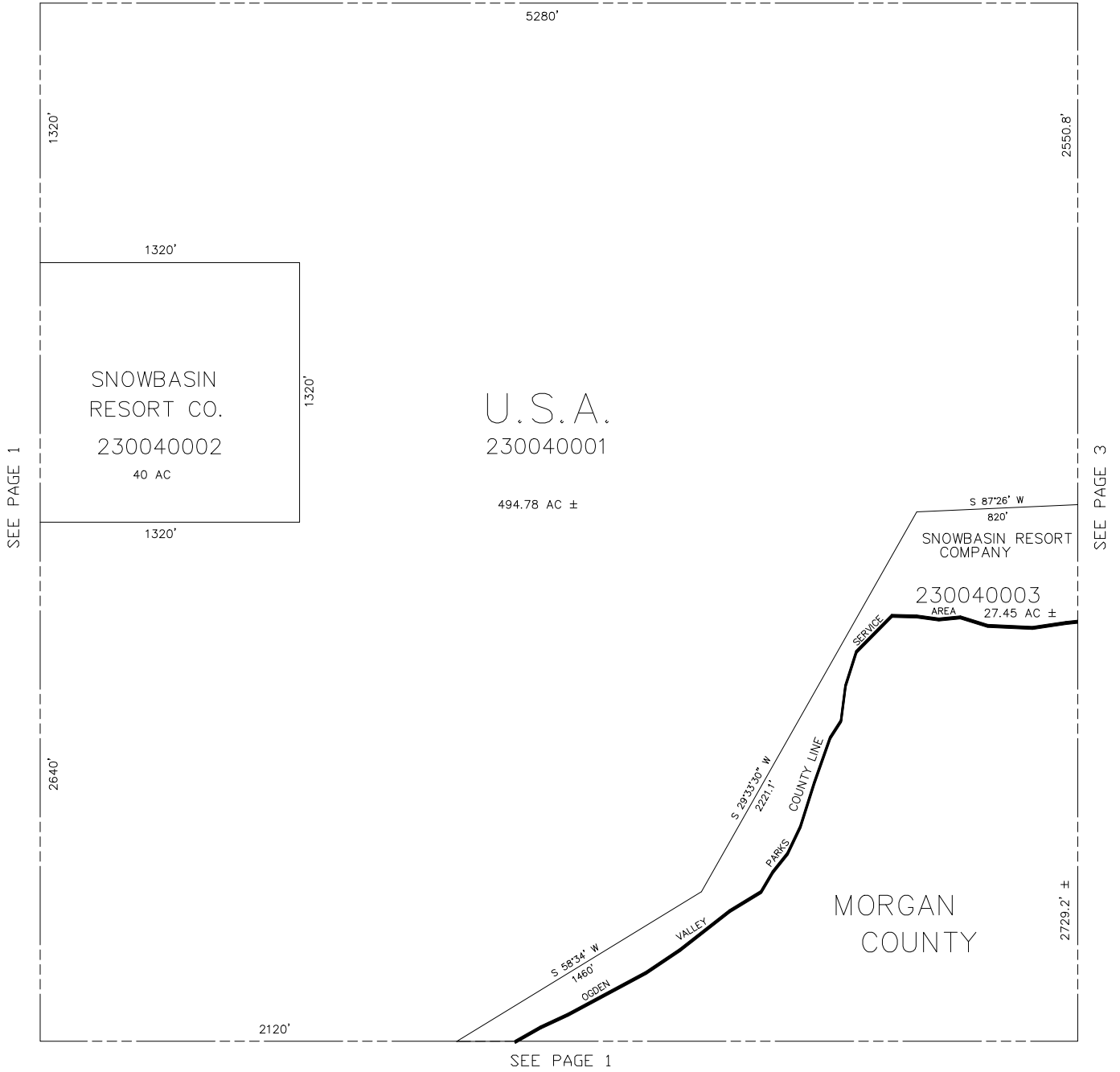


SECTION 5, T.5N., R.1E., S.L.B. & M.
IN WEBER COUNTY
SCALE 1" = 400'

TAXING UNIT: 520

SEE BOOK 20, P. 43



SEE PAGE 1

SEE PAGE 3

SEE PAGE 1

NOTE: WEBER/MORGEN ASSESSMENT LINE
CHANGED TO COUNTY LINE - 1998